

# FLORIDA REPERTORY THEATRE

2014-2015 SEASON



HISTORIC ARCADE THEATRE • FORT MYERS RIVER DISTRICT  
ROBERT CACIOPPO, PRODUCING ARTISTIC DIRECTOR

PRESENTS

# VANYA AND SONIA AND MASHA AND SPIKE

BY  
**CHRISTOPHER DURANG**



SPONSORED BY

DR. ALEXANDER M. EATON & DR. HUSSEIN WAFAPPOOR OF THE RETINA HEALTH CENTER

STARRING

VIKI BOYLE\* • MICHELLE DAMATO\*\* • COURTNEY FEIMAN  
RYAN GEORGE\* • KIM OSTRENKO\* • GRAHAM SMITH\*

DIRECTED BY  
**ROBERT CACIOPPO\*\*\***

SET DESIGNER  
**RICHARD CROWELL†**

LIGHTING DESIGNER  
**ROBERT ROBINS**

COSTUME DESIGNER  
**ALEXANDRIA HOFFMAN**

SOUND DESIGNER  
**JOHN KISELICA**

ASST. TO THE DIRECTOR  
**RACHEL BURTRAM†**

ASST. STAGE MANAGER  
**JOSHUA BROWN**

PRODUCTION STAGE MANAGER  
**AMY L. MASSARI\*†**

Originally produced on Broadway by:

Joey Parnes, Larry Hirschhorn, Joan Raffae/Jhett Tolentino, Martin Platt & David Elliot, Pat Flicker Addiss, Catherine Adler, John O'Boyle, Joshua Goodman, Jamie deRoy/Richard Winkler, Cricket Hooper, Jiraneck/Michael Palitz, Mark S. Golub & David S. Golub, Radio Mouse Entertainment, Shawdowcatcher Entertainment, Mary Cossette/Barbara Manocherian, Megan Savage/Meredith Lynsey Schade, Hugh Hysell/Richard Jordan, Cheryl Wiesenfeld/Ron Simons, S.D. Wagner, John Johnson in association with McCarter Theater Center and Lincoln Center Theater.

Originally commissioned and produced by McCarter Center Theater, Princeton, N.J.

Emily Mann, Artistic Director; Timothy J. Shields, Managing Director; Mara Isaacs, Producing Director; and produced by Lincoln Center Theater, New York City under the direction of Andre Bishop and Bernard Gersten in 2012.

## 2014-15 GRAND SEASON SPONSORS



The Fred & Jean Allegretti Foundation • Bruce & Janet Bunch • Cheryl & David Copham  
Gholi & Georgia Darehshori • Ed & Ellie Fox • John & Marjorie Madden • Sue & Jack Rogers • Arthur Zupko

This entire season sponsored in part by the State of Florida, Department of State, Division of Cultural Affairs, and the Florida Council on Arts and Culture. Florida Repertory Theatre is a fully professional non-profit LOA/LORT Theatre company on contract with the Actors' Equity Association that proudly employs members of the national theatrical labor unions. \*Member of Actors' Equity Association. \*\*Member of the Stage Directors and Choreographers Society. \*\*\*Member of United Scenic Artists. †Member of Florida Repertory Theatre's Ensemble of Theatre Artists

# CAST

(IN ORDER OF APPEARANCE)

Vanya.....	<b>GRAHAM SMITH*</b>
Sonia.....	<b>VIKI BOYLE*†</b>
Cassandra.....	<b>MICHELLE DAMATO*†</b>
Masha.....	<b>KIM OSTRENKO*</b>
Spike.....	<b>RYAN GEORGE*</b>
Nina.....	<b>COURTNEY FEIMAN</b>

## TIME & PLACE

A lovely farmhouse in Bucks County, PA. The Present.

VANYA AND SONIA AND MASHA AND SPIKE will be performed with one 15-minute intermission.

**Understudies:** Mike Magliocca & Elise Miller

The video and/or audio recording of this performance by any means whatsoever is strictly prohibited.

## ABOUT THE PLAYWRIGHT

**CHRISTOPHER DURANG** has had plays On and Off-Broadway including *Vanya and Sonia and Masha and Spike* (winner of the 2013 Tony Award for Best Play), *A History of the American Film* (Tony nomination); *Sister Mary Ignatius Explains It All For You* (Obie Award); *Beyond Therapy*; *Baby with the Bathwater*; *The Marriage of Bette and Boo* (Obie Award, Hull Warriner Award); *Laughing Wild*; *Betty's Summer Vacation* (Obie Award); *Mrs. Bob Cratchit's Wild Christmas Binge*; and *Miss Witherspoon*, which had a double premiere at McCarter Theatre and at Playwrights Horizons. His musical, *Adrift in Macao*, with book and lyrics by Mr. Durang and music by Peter Melnick, received its New York City premiere at Primary Stages following a run at Philadelphia Theatre Company. As an actor, Mr. Durang has appeared in movies and in his own plays. He's appeared with Sigourney Weaver in their co-authored *Das Lusitania Songspiel* (Drama Desk nominations for both of them), and with Julie Andrews in the Stephen Sondheim revue *Putting It Together* at Manhattan Theatre Club. With John Augustine and Sherry Anderson he performed his crackpot cabaret *Chris Durang and Dawne* (Bistro Award). With Marsha Norman, he's co-chair of the Playwriting Program at Juilliard where they have jointly won the Margo Jones Award for their work with developing playwrights. He is a member of the Dramatists Guild Council.

"Here Comes The Sun"

Written By George Harrison

Published By Harrisongs, Ltd. (ASCAP)

Used By Permission. All Rights Reserved

VANYA AND SONIA AND MASHA AND SPIKE is presented by special arrangement with Dramatists Play Service, Inc., New York.

†Member of Florida Repertory Theatre's *Ensemble of Theatre Artists*.  
See page 21 for the entire ensemble.

\*\*



The Actors & Stage Manager employed in this production are members of Actors' Equity Association, the Union of Professional Actors and Stage Managers in the United States.

**VANYA AND SONIA AND MASHA AND SPIKE**

# PROGRAM NOTES

## Christopher Durang on *VANYA AND SONIA AND MASHA AND SPIKE*

“The first three names in the title—Vanya, Sonia, and Masha—come from Chekhov plays. Spike is a very modern name, and it is meant to be jarring. Usually if I say the title aloud, people laugh when they hear the last name in the list.”

“The play is not based on Chekhov, nor is it a parody of Chekhov. It’s as if I took characters and themes from Chekhov and put them in a blender.”

“You don’t have to know Chekhov to enjoy it.”

### MY LIFE WITH CHEKHOV *From the Lincoln Center Theater Review* • [www.LCT.org](http://www.LCT.org)

I had the idea to write *Vanya and Sonia and Masha and Spike* a few years ago, when I realized that I was now the age that Vanya was (or seemed to be). And, like Vanya and other Chekhov characters, I started to reassess choices made in the past. I live in a stone farmhouse with my partner, the writer-actor John Augustine, on a small hill in Bucks County, Pennsylvania. I choose to live here for the quiet and the trees, and there is a small pond where a blue heron comes and sees what is available to eat. But I started to think to myself, What if I didn’t live with my partner here, but with my adopted sister, and the two of us had spent fifteen years taking care of our elderly and eventually incoherent parents. What if we never left the house we lived in as children, and felt jealous of our older sister, who was a glamorous stage and film star. She sends us money, but our lives feel empty and unexciting. What if my life had been closer to a Chekhov play? By the way, I also have cherry trees around the house. About nine of them, I’d say. Very pretty two weeks a year. My play is not a parody. It is set in the present day.

## THE MORE YOU KNOW: A Glossary of Helpful Terms

Durang’s play puts Chekhov’s characters and themes “in a blender”—but before the lid goes on, he dashes in some Greek mythology, a healthy dose of his unique brand of humor, a pinch of Pennsylvanian geography, and a side dish of pop culture references for a bit of extra flavor. Here are just a few of the terms you might want to know...

**Anton Chekhov (1860–1904):** A Russian doctor and dramatist, and is widely considered to be one of the greatest playwrights of the nineteenth century. From Chekhov, many contemporary playwrights have learned how to use mood, apparent trivialities, and inaction to highlight the internal psychology of characters. Chekhov is most well-known for four major works: *The Seagull* (1896), *Uncle Vanya* (1897), *Three Sisters* (1901), and *The Cherry Orchard* (1904). His work is often associated with the Moscow Art Theatre, founded by Konstantin Stanislavsky and Vladimir Nemirovich-Danchenko. He was influenced heavily by the Symbolist Movement and the works of August Strindberg. Chekhov strove to write characters that were relatable and recognizable, and with whom his audiences could connect. Chekhov said “what happens onstage should be just as complicated and just as simple as things are in real life. People are sitting at a table having dinner, that’s all, but at the same time their happiness is being created, or their lives are being torn apart.”

**Vanya & Sonia:** Characters from Chekhov’s play, *Uncle Vanya*. In that play, Vanya, and his niece Sonia, are visited by Vanya’s elderly brother, the Professor, and his much younger trophy wife. Vanya and Sonia are the caretakers of the family’s estate in the country on which they depend for their livelihoods. A crisis ensues when the Professor announces plans to sell the estate.

**Masha:** A character from Chekhov’s *The Seagull*. Masha is famously “in mourning for her life,” and spends the play depressed and wearing all black. She is a heavy drinker and is addicted to snuff. Her depression stems, in part, from unrequited love and the feeling that her life isn’t exciting enough. She gives in to disappointments and accepts them, though she hopes for change.

**Nina:** One of the four protagonists in *The Seagull*. Nina is a neighbor to the family at the center of the play, and lives across the pond between the two houses. Nina is naïve, smart, idealistic, and ambitious despite a very insecure future. She has aspirations of being an actress.

**Cassandra:** From Greek mythology, Cassandra is a princess of Troy. The god Apollo wanted to seduce her and gave her the gift of prophecy but she refused him, so he altered her gift: she would be able to prophesy but no one would believe her.

**Stanislavskian:** A style of acting named after Russian actor/director/producer and founder of the Moscow Art Theatre, Konstantin Stanislavsky (1863-1938). The Stanislavsky Method attempted to find a realistic style of acting that fit with the 20th-century drama.

**Bucks County:** Pennsylvania’s fourth most populous county; founded by William Penn in 1682. Approximately 30 driving miles from Philadelphia and 75 from New York City. Bordered by Montgomery and Berks counties.

**The Wawa:** A chain of gas stations founded in Wawa, Pa. “Wawa” is the Native American word for Canadian Goose.

**Dorothy Parker (1893-1967):** A witty American writer and poet. She was one of the founders of the Algonquin Round Table in the 1920s. Parker bought a house in Bucks County in 1936 and lived there part-time for almost 20 years.

**Dame Maggie Smith (b. 1934):** Famed British actress who won an Oscar for *The Prime of Miss Jean Brody* in 1969. She has appeared in countless films and stage productions, but is most well known for her recent appearances in the *Harry Potter* films and the BBC series, *Downton Abbey*.

## CREATIVE TEAM



### **VIKI BOYLE\*** (Sonia)

is a 35-year veteran of New York and regional theatre, film, and TV. She last appeared at Florida Rep in *Arsenic and Old Lace*, *Noises Off*, and Neil Simons' *Rumors*.

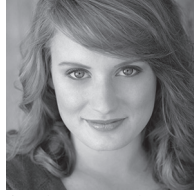
Off-Broadway credits at the Roundabout, MCC, and American Globe theatres include her own work *The Whole Truth*, winner of the Samuel French Short Play Series, and *Term Limit* for which she won the top prizes for both acting and writing. She received two Carbonell Awards for *The Little Foxes* and *Don't Dress for Dinner* at the former Caldwell Theatre in Boca Raton. Her movie and TV credits include *The Wolf of Wall Street*, *The Leftovers*, *Person of Interest*, and over 200 commercials, where her work has been recognized with the CLIO award. Besides contributing to her wonderful musical tribute *A Dash of Rosemary*, she and writing partner Doug Kampsen publish NYC Trivia Tours, a series of self-guided walking tours of New York City. She is overjoyed to be back at Florida Rep with this incredibly talented company.



### **MICHELLE DAMATO\***

(Cassandra) is returning for her tenth show with Florida Rep. Audiences will remember her from her roles in *Miracle on South Division Street*, for which she won Best

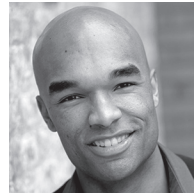
Featured Actress in a Play from BroadwayWorld.com Fort Myers/Naples, as well as *Heart Song*, *Bedroom Farce*, *Rumors*, *Sylvia*, *Rabbit Hole*, *Almost, Maine*, *A Funny Thing Happened on the Way to the Forum*, and *Dancing at Lughnasa*. She is a graduate of Circle in the Square Theatre School in NYC and came to Florida by way of Louisville, KY, where she was a company member with Stage One for four years. Some of her favorite roles include *Oliver Twist* off-Broadway at the Promenade Theatre and the voice of Shawna in MTV's *Daria: Is It College Yet?* As a voice-over artist Michelle has done over fifty commercials and audio books. She was a founding member of the Circle Players and the Daughters of Monty, both New York City based improv companies. Michelle is a proud member of Actors' Equity.



### **COURTNEY FEIMAN**

(Nina) hails from Atlanta, GA and is a recent graduate of High Point University with a degree in music and theatre performance. Her credits include being nominated

for the Kennedy Center American College Theatre Festival for her roles as Little Sally in *Urinetown*, Lois Lane in *Kiss Me, Kate*, and Madame de Tourvel in *Les Liaisons Dangereuses*. In college, Courtney was a part of Phi Mu Sorority, Alpha Psi Omega, Petal Points, and the HPU Chamber Singers. She is currently one of the performance interns at Florida Rep and appears in the touring children shows, *Journey to Oz* and *The True Story of the Three Little Pigs*. This is Courtney's first performance at Florida Rep and she couldn't be more thrilled! She would like to thank her wonderful family and friends for always supporting her and encouraging her to follow her dreams!



### **RYAN GEORGE\*** (Spike)

is a NYC based actor. He received his B.F.A. in Theatre Performance at UF. His NYC credits include *I Hope They Serve Beer on Broadway* (Roy Arias Theatre) and

*Sweethearts of Swing* (The Triad). Regional credits include the Hippodrome Theatre: *Defiance* (Capt. Lee King), *The Tempest* (Caliban), and *A Midsummer Night's Dream* (Demetrius/Snug). As well as The Gablestage: *The Brothers Size* (Oshoosi Size) and *Hamlet* (Laertes/Rosencrantz). Commercial work includes DIRECTV and Gillette. He can also be seen in numerous online and digital media videos on Youtube and The Onion News Network. He is thrilled to be making his Florida Rep debut! He thanks his family and friends for their continued love and support!



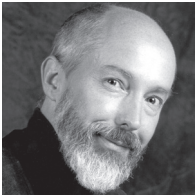
### **KIM OSTRENKO\***

(Masha) is a native Miamian and has been a proud member of Actor's Equity and Screen Actors Guild for several decades. She is thrilled to be back at Florida Rep, where

she was last seen in *You Can't Take it With You*.

## CREATIVE TEAM

Kim's credits include: *August: Osage County* and *Bonnie & Clyde*, both at FAU Summer Rep, *The Last Schwartz* (Parade Productions), *Becky's New Car*, *The Boy From Russia*, *Picasso at the Lapin Agile*, and *A Funny Thing Happened on the Way to the Forum* (Actor's Playhouse), *God of Carnage*, *Distractions*, *Lying in State*, *Lend Me a Tenor*, and *Don't Dress for Dinner* (Caldwell Theatre), *Gulf of Westchester* and *Fish or Cut Bait* (Florida Stage), *A Round Heeled Woman* (Gablestage, starring Sharon Glass), *Sylvia* (Florida Studio Theatre), *Well* (PlayMakers Rep in Chapel Hill, NC), *A Midsummer Night's Dream* (NCSF), and five seasons of *Summer Shorts Festival* (City Theatre). Film: *Dolphin Tale* and *Dolphin Tale 2*, *A Change of Heart*, *Boynton Beach Club*, *Sex Drive*, *Bachelor Party 2*, *Loving The Bad Man*. TV: *Real Rob*, *Graceland*, *Magic City*, *Burn Notice*, *From The Earth To The Moon*. Kim would like to thank her family and friends for their humor, love, and support.



### **GRAHAM SMITH\***

**(Vanya)** grew up jumping out of empty boxes in his father's family-vaudevillemagic show, which toured the US and Europe from 1961-1973.

BA: Davidson College,

MFA: The Hilberry Classic Theatre. He has appeared in nearly two hundred plays and eleven films. He worked for Charlotte Repertory from 1981-2002, spent fifteen seasons with the North Carolina Shakespeare Festival, and is presently a company member with People's Light and Theatre in Philadelphia (since 1998). He also works regularly at other theatres, including Riverside Theatre, Actors Theatre of Louisville, North Carolina Stage Company, Festival Stage, Cape Fear Regional Theatre, and Children's Theatre of Charlotte. Notable roles include three Lears, three Cascas, two Jacques, Malvolio, Toby and Aguecheek, Master Ford, Autolycus, Stephano, Gonzalo, Puck, Oberon (2), and Peter Quince (2) in forty-two productions of Shakespeare. Other favorites include Harpagon (2), Argan, Alceste, Roy Cohn in *Angels in America*, Thomas More in *A Man for All Seasons*, Tobias in *A Delicate Balance*, Don Quixote in *The Return of Don Quixote*, Salter in *A Number*, Rance in *What the Butler Saw*, Rothko in *Red*, Louis in *Shipwrecked* (2), Author/Buks in *Valley Song* (2), Owen in *The Foreigner* (6), and *Bob Cratchit* (15). He spent the past year working on a collaboration between National Theatre of Scotland and People's Light.

At Florida Rep, he played Henry Ford in *Camping With Henry and Tom* and Joseph in *My Three Angels*. Happy to be back at Florida Rep, he lives in Charlotte, NC with his wife, Audrey Brown, and Golden, Henry.

**JOSHUA BROWN (Assistant Stage Manager)** is a Stage Management Intern at Florida Rep this season. He has recently graduated from Kent State University with a Bachelor's Degree of Fine Arts in Theatre Technology and Design. While there, he worked on shows such as *Pride and Prejudice*, *Plain and Fancy*, and *A Midsummer Night's Dream*. Over the summer, he worked at Porthouse Theatre, a professional, Equity summer stock company in Ohio, where he helped with shows such as *My Fair Lady*, *Starmites*, and *Oliver!* He is originally from Ohio and is having a wonderful time working for Florida Rep!

### **RACHEL BURTRAM† (Assistant to the Director)**

is thrilled to be assisting for the first show of Season 17! Rachel has been a company member since 2002, and has performed in almost 20 plays with the Rep. Additionally, she has played the roles of Company Manager, Front of House Manager, Director of Audience Development and Associate Director here at the Rep. Currently, she serves as Production Manager for ArtFest Fort Myers. Favorite roles at the Florida Rep include: *Clybourne Park*, *Miracle on South Division Street*, *August: Osage County*, *Trying*, *Doubt*, *Amy's View* (with Carol Lawrence). Other Regional Theatre credits: Actors Theatre of Louisville and the Humana New Play Festival, Riverside Theatre, The Kitchen Theatre, Hippodrome Theatre, City Equity Theatre, Barnstormers Theatre, Gloucester Stage. NYC credits include: Actors Studio, Vital Theatre Company, NYC International Fringe Festival. TV & Film: *Emma's Fine*, *Burn Notice*, *World Traveler*. National commercials. Rachel is a proud member of Actors Equity. Thank you to Bob for the chance to be involved with this wonderful production! Keep an eye out for Rachel "on the boards" later in the season... [www.rachelburtram.com](http://www.rachelburtram.com)

**RICHARD CROWELL†** (Set Designer) has been designing scenery and lighting for the stage in various parts of the country for over thirty years. He is delighted to be considered a long-time member of Florida Rep's "Ensemble of Theatre Artists," designing in the Arcade since the inaugural season. *Arsenic and Old Lace*, *Tally's Folly*, *Red*, *The Rainmaker*, *The Last Romance* are among the over twenty-five designs that have

# CREATIVE TEAM

been produced at Florida Rep. Richard received his MFA from the stage design training program at Meadows School of the Arts, Southern Methodist University, and his BFA from Memphis State University.

**ALEXANDRIA HOFFMAN (Costume Designer)** makes her Florida Rep debut with *Vanya and Sonia and Masha and Spike*. Her credits include *The Grass is Greenest* at the Houston Astrodome, *Brandon Stock* (Outside Inside at NYC Fringe); *Cross*, *Gerry Maravilla* (Isosceles Media); *For A Good Time Call Kathy Blanchard*, *Kaitlyn Samuel* (Outside Inside at NYC Fringe). Assistant Costume Design- Off Broadway: *The Architecture of Becoming*, *Kate Fry* (Women's Project Theater); *Philosophy for Gangsters*, *Sarah Cogan* (Rotten Apples Theatrical); *One Night, Jessica Jahn* (Rattlestick at Cherry Lane Productions); *F#%ng Up Everything*, *Melissa Trn*; *Totally Tubular Time Machine*, *Sarah Cogan*. Other: *Marry Harry*, *Stefanie Genda* (American Theater Group); *The Cripple of Inishmaan*, *Stefanie Genda* (Hartt School); *Bubble Boy*, *Liz Groth* (American Theater Group); *Barnum*, *Stefanie Genda* (Hartt School). She served as Millinery Assistant to Corrina Griffin for Radio City's Christmas Spectacular and Costume Administrator at Glimmerglass Theater Festival, MA. NYU Visual Culture: Costume Studies; BA UCSB History and Theater, emphasis Costume Design. [www.ahcostumedesign.com](http://www.ahcostumedesign.com)

**JOHN KISELICA (Sound Designer)** is a graduate of West Virginia University with a Bachelor of Fine Arts Degree in Lighting and Sound Design. He recently worked on the national tour, *Buddy: The Buddy Holly Musical*, as the Master Electrician after a contract with Royal Caribbean International as a Stage Technician. Commercial theatrical work includes installing Prodigy Hoists, an automated rigging system from Electronic Theatre Controls. John spends his summers in Lynchburg, VA as the resident Sound & Lighting Designer with Endstation Theatre Company. He is extremely excited to be here at Florida Rep for his first season.

**MIKE MAGLIOCCA (u/s Spike)** is an actor and fight choreographer from Pittsburgh, PA, where he recently earned his BA in Theatre Arts from the University of Pittsburgh. He is happy to be a part of the *Vanya and Sonia and Masha and Spike* team for his first mainstage production of the season and looks forward to joining the cast of *Around the World in 80 Days* here at Florida

Rep in February. As a Florida Rep Performance Intern, he is excited to appear in the Children's Theatre Series productions of *Journey to Oz* (Tin Woodsman) and *The True Story of the Three Little Pigs* (Various). Recent acting credits include *The Lost Colony* (Historian), *Romeo & Juliet* (Paris) with Pittsburgh Shakespeare in the Parks, *In the Heights* (Usnavi) and *Sweeney Todd* (Anthony) with University of Pittsburgh Stages. Mike is a member of the Society of American Fight Directors and enjoys choreographing stage combat.

**AMY L. MASSARI\*† (Production Stage Manager)** is pleased to be returning for her sixth season as Florida Rep's resident stage manager. Amy has been a proud member of Actor's Equity Association for the past 25 years, working in some of the country's finest regional theatres: the Alley Theatre (Houston, TX), the Dallas Theatre Center (Dallas, TX), Stage-West (Springfield, MA), the Pioneer Memorial (Salt Lake City, UT), and the Colorado Shakespeare Festival (Boulder, CO). Among her favorite Florida Rep productions are *Social Security*, *The Fantasticks*, *Lend Me a Tenor*, *August: Osage County*, *Sylvia*, and *God of Carnage*. Amy has been happily married to her husband of 17 years, Michael. Michael is a terrific partner and father to their children Jesse Cheyenne and Caleb Dakota.

**ELISE MILLER (u/s Cassandra, Nina)** is a recent graduate of Columbus State University with a BFA in Acting and Directing with Teacher Certification. Elise is currently a performance intern at Florida Rep, and will make her debut in the Children's Theatre Series in *Journey to Oz* (Wicked Witch), and *The True Story of the Three Little Pigs* (Judge Prudence). Previous credits include *The Illusion* (Melibea/Isabelle...), *Seussical: The Musical* (Gertrude McFuzz), *Beggars in the House of Plenty* (Ma/Noreen), and *Amadeus* (Constanze). Elise is very thankful to be working with such a talented and hardworking cast, and is excited for what is to come this season. Watch out for her in Florida Rep's spring production of *Dividing the Estate*, as Irene Ratliff.

**ROBERT ROBINS (Lighting Designer)** has had his work seen Off Broadway and regionally in the United States. He has designed lighting for over 800 theatre, dance, industrial, and special events. Regional credits include Resident Lighting Designer for the Hippodrome State Theatre (30 years), Florida Rep, Flat Rock Playhouse, Florida Audubon Society, Florida

Foundation, Dance Alive!, Shands Hospital at the University of Florida, City of Gainesville, Ocala Civic Theatre, and Marion Ballet Theatre. He is a designer and consultant with SKDesign, specializing in architectural lighting design. Bob has been faculty at Tennessee Governor's School for the Arts, Drury University, Santa Fe College, and Eastside High School. He has certification as a Professional Educator in the state of Florida, is an Actors' Equity Association Stage Manager, and proudly holds a BFA in Theatre Production from the University of Florida. See more of Bob's work at [www.robertrobins.com](http://www.robertrobins.com)



**Actors' Equity Association (AEA)** was founded in 1913 as the first of the American Actor unions. Equity's mission is to advance, promote and foster the art of theatre as an essential component of our society.

Today, Equity represents more than 40,000 actors, singers, dancers and stage managers working in hundreds of theatres across the United States. Equity members are dedicated to working in the theatre as a profession, upholding the highest artistic standards. Equity negotiates wages and working conditions and provides a wide range of benefits including health and pension plans for its members. Through its agreement with Equity, this theatre has committed to the fair treatment of the actors and stage managers employed in this production. AEA is a member of the AFL-CIO and is affiliated with FIA, an international organization of performing arts unions. For more information, visit [www.actorsequity.org](http://www.actorsequity.org).



The director is a member of the **Stage Directors and Choreographers Society**, a national theatrical labor union.



**Florida Professional Theatres Association (FPTA)** is a statewide

organization of professional theatre companies and theatre professionals interested in the development and promotion of professional theatre throughout Florida. Florida Repertory Theatre is a proud FPTA member theatre.



**National New Play Network**

The National New Play Network is the country's alliance of nonprofit theaters that champions the

development, production, and continued life of new plays. The NNPN strives to pioneer, implement, and disseminate ideas and programs that revolutionize the way theaters collaborate to support new plays and playwrights. Florida Repertory Theatre is proud to be an Associate Member of the National New Play Network.



Florida Repertory Theatre is a member of **Theatre Communications Group (TCG)**,

the national organization for the American Theatre.

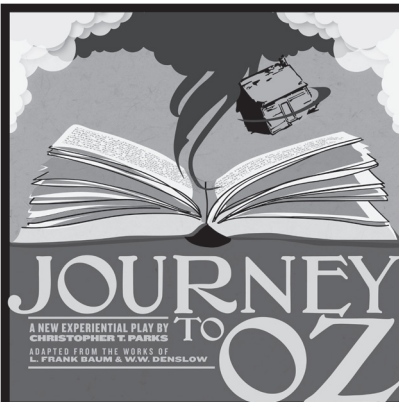


**SPECIAL THANKS TO**

Palm Casual

The Asolo Repertory Theatre

Portions of the Dramaturgy excerpted from material created for The Guthrie Theatre's Playguide.



**LUNCHBOX THEATRE SERIES FOR CHILDREN & FAMILIES**

Sponsored by the Alan and Jacquelin Cadkin Foundation  
Original Music Sponsored by LCEC

**A Magical and Interactive NEW PLAY from the Author of Florida Rep's Hit, THE ODYSSEY EXPERIENCE!**

**DON'T JUST SEE JOURNEY TO OZ... EXPERIENCE IT!**

**HISTORIC ARCADE THEATRE • NOV. 21 @ 11AM  
Tickets \$12 and Include Lunch from The Deli!**

**239.332.4488 • WWW.FLORIDAREP.ORG**